

alzheimer'swa
the dementia experts

A photograph of two women sitting at a table, smiling and laughing. The woman on the left is older, with short brown hair, wearing a dark blue floral patterned jacket over a white top and a pearl necklace. The woman on the right is younger, with dark hair and sunglasses on her head, wearing a patterned top. They are both looking towards the right. On the table in front of them are two cups of tea on saucers. A potted plant is visible in the background.

Pathway to care

**Dementia specialist
home care services**



If you are living with dementia, Alzheimer's WA can provide you with dementia specialist home care services, tailored to meet your individual needs.

Whether you need help around the home, or out in the community, Alzheimer's WA will work with you and support you to live well with dementia.

We can also arrange for your carer to have a break for a few hours, overnight or longer if required.

Please call us on **1300 66 77 88** for more information.

Contents

Why choose Alzheimer's WA	1
Pathway to care	2
Services and pricing	6
Home care package funding	8

alzheimer'swa
the dementia experts

1300 66 77 88
alzheimerswa.org.au

Telephone: 1300 66 77 88
Facsimile: (08) 9388 2739
PO Box 1509, Subiaco WA 6904
support@alzheimerswa.org.au

Why choose Alzheimer's WA

As the dementia experts, Alzheimer's WA has been providing care and support to people living with dementia for over 36 years.

Our philosophy of care uses evidence based therapeutic support and is shaped by the lived experience of dementia and our long history of best practice dementia care. The client and our specialist knowledge guide what we do.

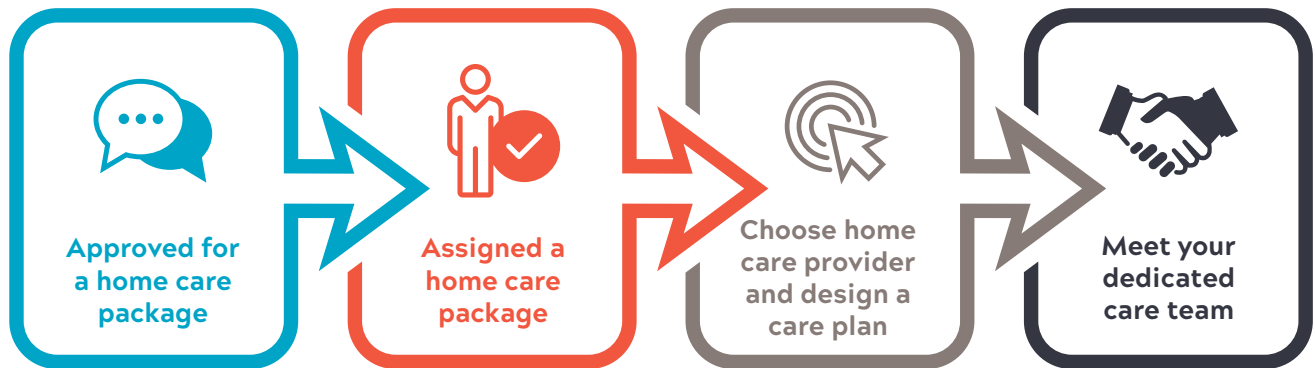
Our services are truly person-centred, based on the Eden Alternative® and their Domains of Wellbeing™. We work with our clients to maximise their abilities and enhance a greater sense of wellbeing.



Reasons to choose Alzheimer's WA

- 1** Dementia specialists: providing support for people living with dementia is core to who we are and what we do.
.....
- 2** Consistent team of staff: so you can develop relationships with your care staff and they can get to know your preferences and routines.
.....
- 3** Individual plans to meet your individual needs.
.....
- 4** Dedicated care manager: one person for you to contact and work with for any changes you require to your services.
.....
- 5** We listen. Our approach in everything we do is guided by people, like you, who are living with dementia.

Pathway to care

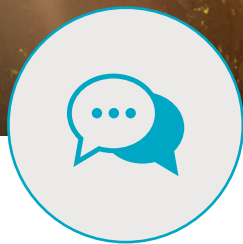


To access a home care package you need to meet with a member of the Aged Care Assessment Team (ACAT) for a comprehensive assessment. For information about arranging an assessment please contact My Aged Care on 1800 200 422 or visit myagedcare.gov.au.

We recommend arranging an assessment as soon as possible after diagnosis as average wait times for higher level home care packages can be more than 12 months.

If you require help urgently, please inform the Aged Care Assessment Team member when they visit, as there are other short-term options available. Alternatively contact us on **1300 66 77 88** to discuss other services you may be able to access.





Approved for a home care package

Following your ACAT assessment, you will be advised by letter if you are **approved for a home care package**. The letter will also inform you of the level of your home care package. **For more information about package levels please visit My Aged Care.**

Once approved, you will be placed on a waiting list in the national queue for a package to be **assigned** to you. Although there is a wait time, it is advisable to start researching home care package providers to ensure a smooth process when you are assigned a package.

You may be eligible for services through the Commonwealth Home Support Program during this waiting period. To learn more about Alzheimer's WA's home care packages or to discuss interim services that best meet your lifestyle and needs please call us on **1300 66 77 88**.



Assigned a home care package

Once a home care package is available, you will be advised by letter that you have been **assigned a package**.

This letter will include a deadline for you to sign up for a package. It is possible to get an extension to this deadline, however if you do not sign an agreement with a home care provider before this date, you will go back to the beginning of the national queue.

To learn more about Alzheimer's WA's home care packages or for help with your deadline please call us on **1300 66 77 88**.



Choose home care provider and design a care plan

Alzheimer's WA is the only dementia specialist home care package provider in Western Australia. Our philosophy of care embraces a person-centred approach that respects the individuality and the experience of those living with dementia.

We aim to help you to remain living at home for as long as possible.

Our dementia specialist care managers work with you to understand your needs and help you navigate the home care package process.

Should you choose Alzheimer's WA as your home care package provider, your care manager will help you through the process of signing your **home care agreement**.

Together you will design a personalised plan that meets your needs and ensures your wellbeing.

You will also agree on a date for your services to start.

Please note: The agreement must be signed by both you and Alzheimer's WA before the deadline stated on your **assigned home care package letter**. For more information regarding home care agreements please visit My Aged Care.



Meet your dedicated care team

Your dementia specialist team will depend on the services you select for your personalised care plan. The team may include support workers, allied health staff and nurses.

Your care manager will introduce you to your dedicated team. Your team is flexible and can be changed if they do not meet your needs.

We aim to keep your team as consistent as possible to enable you to form relationships and for the team to get to know your routines and preferences.

We will work with you to decide on a start date for your services, and continue to work with you as your goals and needs change and adjust your care plan as required.

Services and pricing

Alzheimer's WA offers a range of services to assist you on your dementia journey. Our dementia specialist care managers will work with you to develop a care plan for services that suit your goals, needs and lifestyle.

As the dementia experts, Alzheimer's WA uses evidence-based therapeutic care to provide meaningful activities based on your individual strengths and interests with the aim of building and supporting your wellbeing.

Support in your home

Individual support and personal care (\$75/hr*)

Individual services to support you to continue living independently and engaging in the activities of your choice. This may include help with shopping, showering, dressing, taking medication, meal planning and preparation.

Therapy and health services (\$115/hr*)

Assistance to adjust to the changes you are experiencing including occupational therapy, physiotherapy, speech pathology and social work.

Nursing care (\$95/hr*)

Assistance and nursing care from a clinical nurse.

In-home respite (Price on application)

Support worker to stay in your home to help support you where you are most comfortable.

Support in the community

Social support groups (\$40/hr*)

Friendship clubs and social support groups provide a safe environment for people living with dementia to socialise, remain active in the community and maintain relationships.

Dementia specialist households (\$40/hr*)

Support and opportunity to socialise in our houses, which are dementia friendly environments, providing an enriching experience for the person with dementia.

Short stay respite (\$800/24hr period*)

Overnight stay at our houses providing respite and support in a dementia friendly home environment with meaningful activities and social connection.

*Above charges are based on weekday visits during normal business hours. Surcharges may apply for after-hours, weekend or remote visits. View our pricing schedule for a full price breakdown.



Our pricing is designed to maximise delivery of services to you. We do not charge an administration fee and our care management and coordination fee reflects the specialist nature of the care and the attention we apply to your goals and wellbeing. It also includes a complimentary membership with Alzheimer's WA and access to a range of services and information. We believe this structure allows you access to more hours of service with your package funds.

Other fees and charges

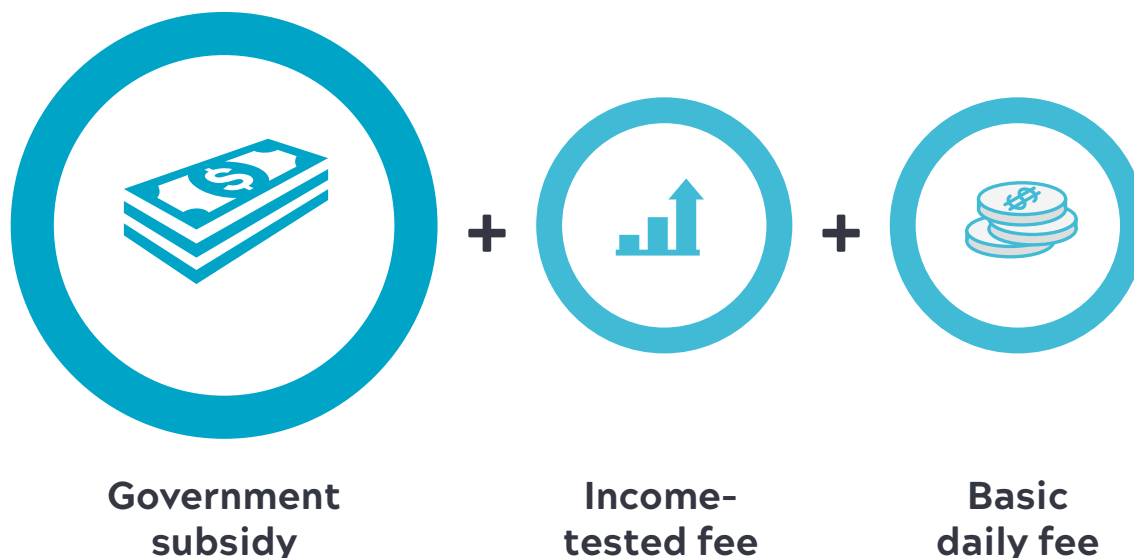
Care management and coordination			
Level 1	0%	Care Establishment	\$950
Level 2	10%	Exit Fee	\$750*
Level 3	20%	Transport	\$1.00 per km
Level 4	20%		

*only payable if sufficient funds remain in package

For more information about services available, what support is best for you or assistance to navigate through the home care package process please call us on **1300 66 77 88**.

**Alzheimer's WA
does not charge an
Administration Fee**

Home care package funding



Government funding

Your home care package is a Government subsidy designed to support you in your own home. There are four levels of home care package available. Level 3 and 4 are often referred to as high level packages and are the most common for people living with dementia.

Level 1	Basic care needs (approx. \$8,250 per annum)
Level 2	Low level needs (approx. \$16,150 per annum)
Level 3	Intermediate care needs (approx. \$33,000 per annum)
Level 4	High level care needs (approx. \$50,250 per annum)

Income-tested fee

The income-tested fee is determined by the Government and will be based on your individual income.

Basic daily fee

The basic daily fee provides an opportunity for you to contribute to your care. A maximum fee is set by the Government, and should you choose to contribute a fee when designing your care plan, the extra funds will allow you to access more services under your plan. This option can be discussed with your care manager when designing your plan.

Can I top up my home care package?

If the level of your package does not meet all of your needs, you can choose to top up your package.

Questions?

If you have any questions about funding for home care packages, visit myagedcare.gov.au. Alternatively you can call us on **1300 66 77 88**.



By your side on your dementia journey

alzheimer'swa
the dementia experts



HEAD OFFICE

55 Walters Drive, Osborne Park WA 6017

Telephone: 1300 66 77 88

Facsimile: (08) 9388 2739

PO Box 1509, Subiaco WA 6904

support@alzheimerswa.org.au

OUR HOUSES

Mary Chester House, Shenton Park
1300 66 77 88

Ella's House, Mandurah
(08) 9535 8772

Hawthorn House, Albany
(08) 9841 3755

alzheimerswa.org.au

 facebook.com/alzheimerswa

 twitter.com/alzheimerswa

 instagram.com/alzheimers_wa

 linkedin.com/company/alzheimers-wa

 youtube.com/alzheimersauswa